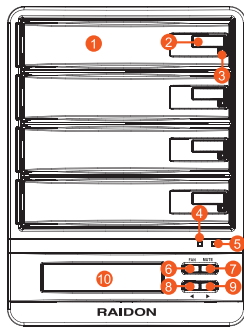


RAIDON

GR5630-WSB3 Quick Installation Guide

Product Diagrams and Contents of Product Package

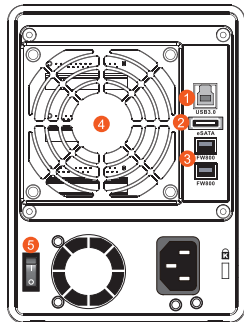
Front View



- 1 Tray Handle
- 2 Button for Tray Clamp
- 3 HD Status LED
- 4 Alarm LED
- 5 Power LED
- 6 FAN Button
- 7 Mute Button
- 8 Select Button
- 9 Select Button
- 10 LCM Display

FAN Button (press to switch mode)
 - Smart fan mode, the rotation speed is variation by temperature. (Default)
 - Full speed mode, fan is full rotation.

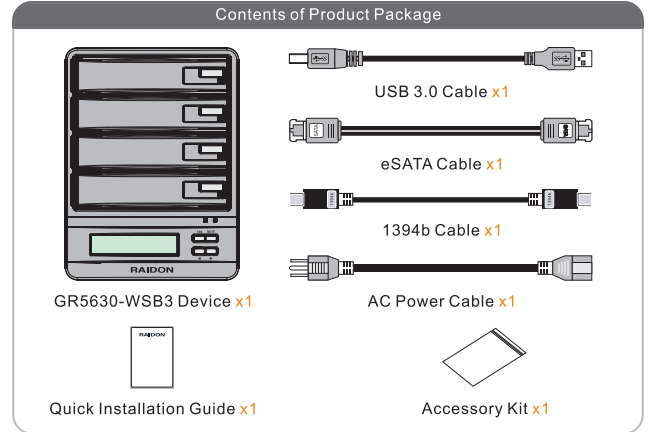
Rear View



- 1 USB3.0 Port
- 2 eSATA Port
- 3 1394b Port
- 4 Fan
- 5 Power Switch

v1.3(Nov.2010)

After you open the outer package, make sure that the following items are contained in the package:



Please make sure that the related accessories and product body are not damaged or missing. If you have any question, please contact the local distributor or the retailer you purchase from for help.

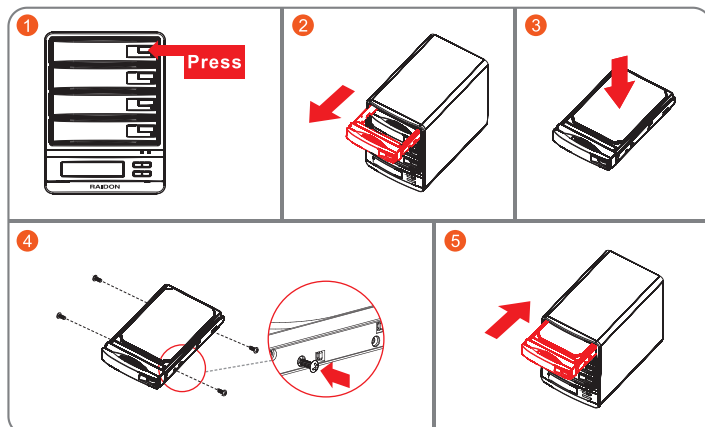
Messages of LED and Buzzer

| Status Description | Alarm LED | HD Status LED | Buzzer |
|----------------------------|-----------|--------------------------------------------------------------------|--------|
| Power On | — | Blue light, red light flash | — |
| Boot Complete | — | Blue light | — |
| No Hard Drives | Red light | Red light | Sound |
| Hard Drive Failure | Red light | Red light | Sound |
| Rebuilding | — | Target : Purple light, red light flash Source : Purple light | — |
| Format | — | Purple light flash | — |
| Access | — | Purple light flash | — |
| Fan Failure (Stop working) | Red light | — | Sound |
| Overheat(over 60°C) | Red light | — | Sound |

1. Alarm LED lighting red means the fan is failed. Please check the fan and have it repaired as soon as possible.
2. Alarm LED lighting red is the warning of overheating but it will not have influence on data transferring. Once the working environment is improved and the temperature is down, the light will be off.

Hardware Installation

1. Press down the button for hard drive clamp.
2. Pull out the hard drive tray kit.
3. Install a 3.5" hard drive on the hard drive tray.
4. Secure screws from the screw kit in 4 positions.
5. Refit the hard drive tray into the GR5630.



Install GR5630

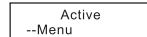
1. Please make sure to install 4 brand new hard drives in the trays and put the trays back into GR5630.
2. Choose one cable (USB, 1394b or eSATA) to connect PC to GR5630.
3. Connect power cable with GR5630 and power on. The system will initialize automatically after booting.

Initialization

- 1) The message shown on LCM display during boot and initialization.



- 2) The initialization will finish as "Active" message shown on the LCM display.



4. The hard drive installation process is completed.
5. Power on the computer connected with GR5630. The user enables to check hard drives through hard drive management tool after booting.

Message Shown on LCM Display

| | | | |
|----------------------------|---------------------------------------------|--------------------------|-----------------------------------------|
| —HALTED— Bad Disk Count | 1. The number of hard drive is not correct. | Degrade --Menu | 3. One hard drive is failed |
| Rebuilding --Menu xh:xm | 2. Rebuild and the time it takes | —HALTED— RAID Invalid | 4. More than one hard drives are failed |

Precaution before Application

1. We strongly suggest use 4 brand new hard drives to enhance the performance of the system.
2. Please make sure to power on GR5630 after installing 4 hard drives or the system may not work correctly.
3. Using used hard drives may cause the system fail to initialize properly. Please use low level format tool to clear existed data on the hard drives before installing them in GR5630.
4. When USB connection being detected, "eSATA-2 ExternalRAID USB Device" will be found in device manager.
5. "FAN" button controls fan speeds in two operate modes of "full speed" and "decelerate".
6. Please establish one connection at a time among USB/eSATA/1394b interfaces to prevent possibilities of data loss during operation.

Thank you for choosing product from **RAIDON Technology Inc.** This information in the manual has been thoroughly checked before publication, but may not conform to the product actually delivered which mean actual product specifications depend on the product shipped to you. Any update in the specifications or product-related information shall not be subject to further notice but for the latest information on the product, please visit the website as www.RAIDON.com.tw or contact us at supporting@raidon.com.tw, and we will get back to you as soon as possible.